



**Acrylic Colour**

sterling silver



midnight canyon



**Cedarlite Cabinet**

grey



walnut



# NIAGRA

**DIMENSIONS:** 89" x 89" x 35"

**CAPACITY:** 8 seats

**JETS:** 73 massage therapy jets

**Luxury Features**

- adjustable stainless steel jets
- spacious footwell
- neck massage jets
- wave jets
- perimeter LED lighting
- waterways thermal vents
- massage upgrade
- silent air controls
- floor drain

**Standard Features**

- illuminated topside controls
- TUFF eternal fibreglass base
- triple layer insulation
- twin filters
- spa ozonator
- comfort pillows
- large LED safety light
- drink holders
- marine grade tapered cover
- limited lifetime warranty

**Options**

- in.Stream 2 bluetooth stereo
- in.Touch 2 smart spa control
- 2 or 3 tier steps
- cover lifter



CONTROL PANEL	CIRCULATION PUMP	DUAL JET PUMPS	MOTOR POWER	HEATER	WATER CAPACITY	DRY WEIGHT	WET WEIGHT
in.YE pack in.k800	quiet energy LX	single speed LX	2 x 3 hp	4 kw	1457 L	350 kg	1807 kg



**Acrylic Colour**

sterling silver



midnight canyon



**Cedarlite Cabinet**

grey



walnut



# PALLAS

**DIMENSIONS:** 89" x 89" x 35"

**CAPACITY:** 6 seats with lounger

**JETS:** 67 massage therapy jets

**Luxury Features**

- adjustable stainless steel jets
- spacious footwell
- neck massage jets
- wave jets
- perimeter LED lighting
- serenity fountain or waterfall
- waterways thermal vents
- massage upgrade
- silent air controls
- floor drain

**Standard Features**

- illuminated topside controls
- TUFF eternal fibreglass base
- triple layer insulation
- twin filters
- spa ozonator
- comfort pillows
- large LED safety light
- drink holders
- marine grade tapered cover
- limited lifetime warranty

**Options**

- in.Stream 2 bluetooth stereo
- in.Touch 2 smart spa control
- 2 or 3 tier steps
- cover lifter



CONTROL PANEL	CIRCULATION PUMP	DUAL JET PUMPS	MOTOR POWER	HEATER	WATER CAPACITY	DRY WEIGHT	WET WEIGHT
in.YE pack in.k800	quiet energy LX	single speed LX	2 x 3 hp	4 kw	1457 L	352 kg	1810 kg



**Acrylic Colour**

sterling silver



midnight canyon



**Cedarlite Cabinet**

grey



walnut



# GRAND FORKS

**DIMENSIONS:** 102" x 88.4" x 35.4"

**CAPACITY:** 8 seats

**JETS:** 113 massage therapy jets

**Luxury Features**

- adjustable stainless steel jets
- spacious footwell
- wave jets
- serenity fountain
- waterways thermal vents
- massage upgrade
- silent air controls
- floor drain

**Standard Features**

- illuminated topside controls
- TUFF eternal fibreglass base
- triple layer insulation
- spa ozonator
- comfort pillows
- large led safety light
- drink holders
- marine grade tapered cover
- limited lifetime warranty

**Options**

- in.stream 2 bluetooth stereo
- in.touch 2 smart spa control
- 2 or 3 tier steps
- cover lifter



CONTROL PANEL	CIRCULATION PUMP	DUAL JET PUMPS	MOTOR POWER	HEATER	WATER CAPACITY	DRY WEIGHT	WET WEIGHT
in.YE pack in.k800	quiet energy LX	single speed LX	3 x 3 hp	4 kw	1970 L	498 kg	2468 kg



**Acrylic Colour**

sterling silver



storm clouds



**Cedarlite Cabinet**

grey



black



# VEGA

**DIMENSIONS:** 88.6" x 61" x 31.5"

**CAPACITY:** 4 seats

**JETS:** 31 massage therapy jets

**Luxury Features**

- adjustable stainless steel jets
- spacious footwell
- wave jets
- serenity fountain
- waterways thermal vents
- massage upgrade
- silent air controls
- floor drain

**Standard Features**

- illuminated topside controls
- TUFF eternal fibreglass base
- triple layer insulation
- spa ozonator
- comfort pillows
- large led safety light
- drink holders
- marine grade tapered cover
- limited lifetime warranty

**Options**

- in.Stream 2 bluetooth stereo
- in.Touch 2 smart spa control
- 2 or 3 tier steps
- cover lifter



CONTROL PANEL	CIRCULATION PUMP	DUAL JET PUMPS	MOTOR POWER	HEATER	WATER CAPACITY	DRY WEIGHT	WET WEIGHT
---------------	------------------	----------------	-------------	--------	----------------	------------	------------

in.YE pack in.k500

quiet energy  
LX

two speed Gecko

3 hp

4 kw

880 L

260 kg

1140 kg



**Acrylic Colour**

sterling silver



storm clouds



**Cedarlite Cabinet**

grey



black



# ZION

**DIMENSIONS:** 88.6" x 88.6" x 35.4"

**CAPACITY:** 5 seats

**JETS:** 67 massage therapy jets

**Luxury Features**

- adjustable stainless steel jets
- spacious footwell
- wave jets
- serenity fountain
- waterways thermal vents
- massage upgrade
- silent air controls
- floor drain

**Standard Features**

- illuminated topside controls
- TUFF eternal fibreglass base
- triple layer insulation
- spa ozonator
- comfort pillows
- large LED safety light
- drink holders
- marine grade tapered cover
- limited lifetime warranty

**Options**

- in.Stream 2 bluetooth stereo
- in.Touch 2 smart spa control
- 2 or 3 tier steps
- cover lifter



CONTROL PANEL	CIRCULATION PUMP	DUAL JET PUMPS	MOTOR POWER	HEATER	WATER CAPACITY	DRY WEIGHT	WET WEIGHT
in.YE pack in.k500	quiet energy LX	two speed Gecko	2 x 3 hp	4 kw	1360 L	430 kg	1790 kg



**Acrylic Colour**

sterling silver



storm clouds



**Cedarlite Cabinet**

grey



black



# AVALON

**DIMENSIONS:** 78.7" x 78.7" x 35.4"

**CAPACITY:** 6 seats

**JETS:** 23 massage therapy jets

**Luxury Features**

- adjustable stainless steel jets
- spacious footwell
- wave jets
- serenity fountain
- waterways thermal vents
- massage upgrade
- silent air controls
- floor drain

**Standard Features**

- illuminated topside controls
- TUFF eternal fibreglass base
- triple layer insulation
- spa ozonator
- comfort pillows
- large led safety light
- drink holders
- marine grade tapered cover
- limited lifetime warranty

**Options**

- in.Stream 2 bluetooth stereo
- in.Touch 2 smart spa control
- 2 or 3 tier steps
- cover lifter



**CONTROL PANEL   CIRCULATION PUMP   DUAL JET PUMPS   MOTOR POWER   HEATER   WATER CAPACITY   DRY WEIGHT   WET WEIGHT**

in.YE pack in.k500

quiet energy  
LX

two speed Gecko

3 hp

4 kw

1130 L

403 kg

1533 kg



**Acrylic Colour**

sterling silver



storm clouds



**Cedarlite Cabinet**

grey



black



# LIRA

**DIMENSIONS:** 82.7" x 82.7" x 35.4"

**CAPACITY:** 6 seats

**JETS:** 44 massage therapy jets

**Luxury Features**

- adjustable stainless steel jets
- spacious footwell
- wave jets
- serenity fountain
- waterways thermal vents
- massage upgrade
- silent air controls
- floor drain

**Standard Features**

- illuminated topside controls
- TUFF eternal fibreglass base
- triple layer insulation
- spa ozonator
- comfort pillows
- large led safety light
- drink holders
- marine grade tapered cover
- limited lifetime warranty

**Options**

- in.Stream 2 bluetooth stereo
- in.Touch 2 smart spa control
- 2 or 3 tier steps
- cover lifter



CONTROL PANEL	CIRCULATION PUMP	DUAL JET PUMPS	MOTOR POWER	HEATER	WATER CAPACITY	DRY WEIGHT	WET WEIGHT
---------------	------------------	----------------	-------------	--------	----------------	------------	------------

in.YE pack in.k500

quiet energy  
LX

two speed Gecko

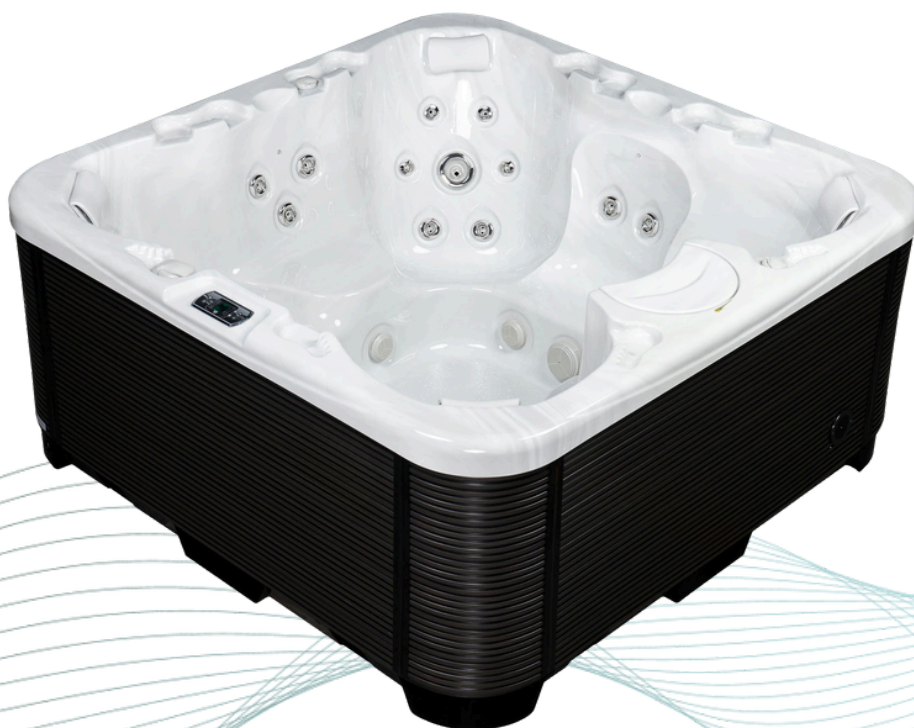
2 x 3 hp

4 kw

1270 L

415 kg

1685 kg



**Acrylic Colour**

sterling silver



storm clouds



**Cedarlite Cabinet**

grey



black



# ARCADIA

**DIMENSIONS:** 78.7" x 78.7" x 35.4"

**CAPACITY:** 7 seats

**JETS:** 35 massage therapy jets

**Luxury Features**

- adjustable stainless steel jets
- spacious footwell
- wave jets
- serenity fountain
- waterways thermal vents
- massage upgrade
- silent air controls
- floor drain

**Standard Features**

- illuminated topside controls
- TUFF eternal fibreglass base
- triple layer insulation
- spa ozonator
- comfort pillows
- large led safety light
- drink holders
- marine grade tapered cover
- limited lifetime warranty

**Options**

- in.Stream 2 bluetooth stereo
- in.Touch 2 smart spa control
- 2 or 3 tier steps
- cover lifter



**CONTROL PANEL   CIRCULATION PUMP   DUAL JET PUMPS   MOTOR POWER   HEATER   WATER CAPACITY   DRY WEIGHT   WET WEIGHT**

in.YE pack in.k500

quiet energy  
LX

two speed Gecko

3 hp

4 kw

1132 L

397 kg

1529 kg



**Acrylic Colour**

sterling silver



storm clouds



**Cedarlite Cabinet**

grey



black



# HERA

**DIMENSIONS:** 80.7" x 69.3" x 32.7"

**CAPACITY:** 3 seats

**JETS:** 39 massage therapy jets

**Luxury Features**

- adjustable stainless steel jets
- spacious footwell
- wave jets
- serenity fountain
- waterways thermal vents
- massage upgrade
- silent air controls
- floor drain

**Standard Features**

- illuminated topside controls
- TUFF eternal fibreglass base
- triple layer insulation
- spa ozonator
- comfort pillows
- large led safety light
- drink holders
- marine grade tapered cover
- limited lifetime warranty

**Options**

- in.Stream 2 bluetooth stereo
- in.Touch 2 smart spa control
- 2 or 3 tier steps
- cover lifter



CONTROL PANEL	CIRCULATION PUMP	DUAL JET PUMPS	MOTOR POWER	HEATER	WATER CAPACITY	DRY WEIGHT	WET WEIGHT
---------------	------------------	----------------	-------------	--------	----------------	------------	------------

in.YE pack in.k500

quiet energy  
LX

two speed Gecko

3 hp

4 kw

685 L

305 kg

990 kg



**Acrylic Colour**

sterling silver



storm clouds



**Cedarlite Cabinet**

grey



black



# NYX

**DIMENSIONS:** 82.7" x 82.7" x 35.4"

**CAPACITY:** 4 seats

**JETS:** 43 massage therapy jets

**Luxury Features**

- adjustable stainless steel jets
- spacious footwell
- wave jets
- serenity fountain
- waterways thermal vents
- massage upgrade
- silent air controls
- floor drain

**Standard Features**

- illuminated topside controls
- TUFF eternal fibreglass base
- triple layer insulation
- spa ozonator
- comfort pillows
- large led safety light
- drink holders
- marine grade tapered cover
- limited lifetime warranty

**Options**

- in.Stream 2 bluetooth stereo
- in.Touch 2 smart spa control
- 2 or 3 tier steps
- cover lifter



**CONTROL PANEL   CIRCULATION PUMP   DUAL JET PUMPS   MOTOR POWER   HEATER   WATER CAPACITY   DRY WEIGHT   WET WEIGHT**

in.YE pack in.k500

quiet energy  
LX

two speed Gecko

2 x 3 hp

4 kw

1390 L

355 kg

1745 kg



**Acrylic Colour**

sterling silver



storm clouds



**Cedarlite Cabinet**

grey



black



# HALO

**DIMENSIONS:** 82.7" x 82.7" x 35.4"

**CAPACITY:** 6 seats

**JETS:** 43 massage therapy jets

**Luxury Features**

- adjustable stainless steel jets
- spacious footwell
- wave jets
- serenity fountain
- waterways thermal vents
- massage upgrade
- silent air controls
- floor drain

**Standard Features**

- illuminated topside controls
- TUFF eternal fibreglass base
- triple layer insulation
- spa ozonator
- comfort pillows
- large led safety light
- drink holders
- marine grade tapered cover
- limited lifetime warranty

**Options**

- in.Stream 2 bluetooth stereo
- in.Touch 2 smart spa control
- 2 or 3 tier steps
- cover lifter



CONTROL PANEL	CIRCULATION PUMP	DUAL JET PUMPS	MOTOR POWER	HEATER	WATER CAPACITY	DRY WEIGHT	WET WEIGHT
in.YE pack in.k500	quiet energy LX	two speed Gecko	2 x 3 hp	4 kw	1395 L	360 kg	1755 kg



**Acrylic Colour**

sterling silver



storm clouds



**Cedarlite Cabinet**

grey



black



# ASTRA

**DIMENSIONS:** 82.7" x 82.7" x 35.4"

**CAPACITY:** 7 seats

**JETS:** 35 massage therapy jets

**Luxury Features**

- adjustable stainless steel jets
- spacious footwell
- wave jets
- serenity fountain
- waterways thermal vents
- massage upgrade
- silent air controls
- floor drain

**Standard Features**

- illuminated topside controls
- TUFF eternal fibreglass base
- triple layer insulation
- spa ozonator
- comfort pillows
- large led safety light
- drink holders
- marine grade tapered cover
- limited lifetime warranty

**Options**

- in.Stream 2 bluetooth stereo
- in.Touch 2 smart spa control
- 2 or 3 tier steps
- cover lifter



CONTROL PANEL	CIRCULATION PUMP	DUAL JET PUMPS	MOTOR POWER	HEATER	WATER CAPACITY	DRY WEIGHT	WET WEIGHT
in.YE pack in.k500	quiet energy LX	two speed Gecko	3 hp	4 kw	1150 L	412 kg	1562 kg